

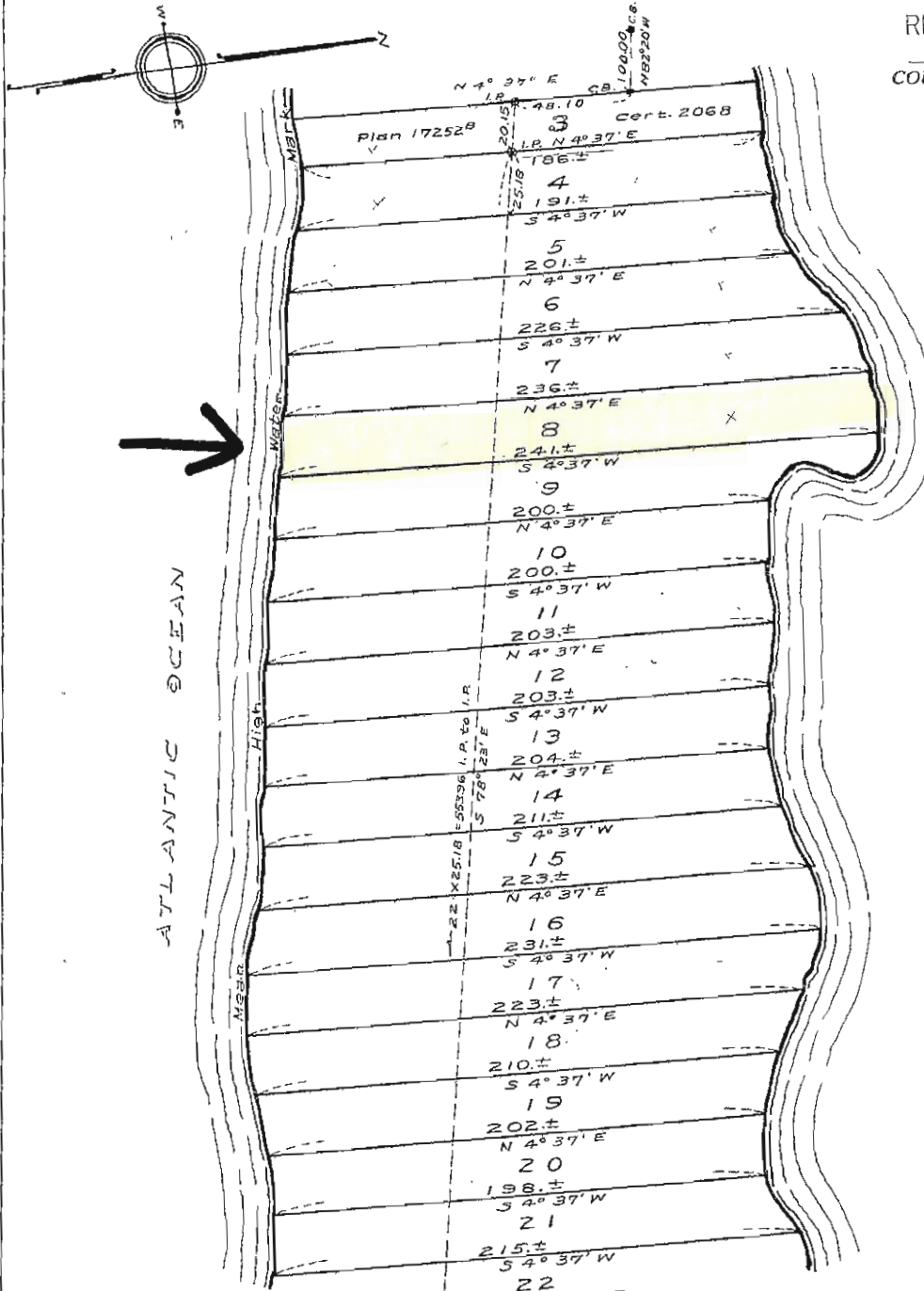
SUBDIVISION PLAN OF LAND IN CHILMARK

William F. Swift, Surveyor

January 1959

17252^C
SHEET 1

RECEIVED-ENTERED
M
COUNTY OF DUKES COUNTY
REGISTRY OF DEEDS
JUN 5 - 1961
PHILIP J. NORTH
REG



See

Sheet 2
Subdivision of Part of Lot 2
Shown on Plan 17252^A Sheet 2
Filed with Cert. of Title No. 1997
Registry District of Dukes County

Separate certificates of title may be issued for land shown hereon and Sheet 2 as Lots 4-23 Inclusive by the Court

Margaret M. Daly
Recorder

FEB. 27, 1961

Copy of part of plan 17252^{C1}
filed in
LAND REGISTRATION OFFICE
MARCH 27, 1963
Scale of this plan 50 feet to an inch
C. M. Anderson, Engineer for Court 1/2

12/3/13

RECEIVED-ENTERED

M
COUNTY OF DUKES COUNTY

REGISTRY OF DEEDS
JUN 5 - 1961

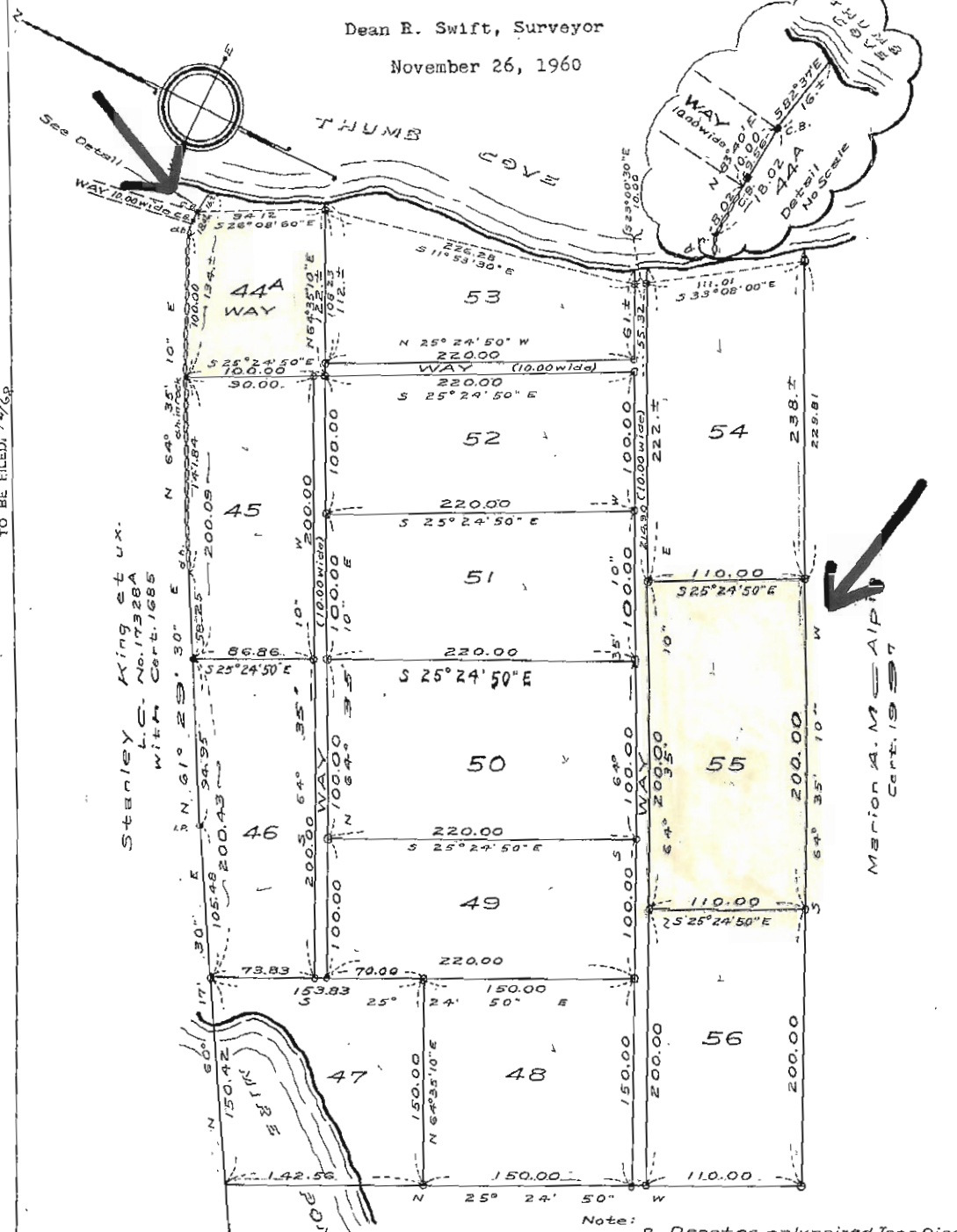
PHILIP J. NORTON,
REGISTERED

SUBDIVISION PLAN OF LAND IN CHILMARK

Dean R. Swift, Surveyor

November 26, 1960

17252^D



SUBDIVISION PLAN

NO. 17252-T

SHOWING CHANGES
TO BE FILED, 6/2/61

Stanley King et ux.
L.C. No. 17328A
with Cert. 1685

Merion A. McAlpin
Cert. 1997

Subdivision of Part of Lot 1
Shown on Plan 17252^A Sheet 1
Filed with Cert. of Title No. 1997
Registry District of Dukes County

Separate certificates of title may be issued for land
shown hereon as Lot 44A & Lots 45-56 Incl.
By the Court.

FEB. 27, 1961

Margaret M. Daly
Recorder

Copy of part of plan
filed in
LAND REGISTRATION OFFICE
FEB. 10, 1961
Scale of this plan 80 feet to an inch
C.M. Anderson, Engineer for Court & L